

REFERENCES :

S. N.	Project Name	Quantity (Qty.)	Heating Surface (m ²)/Qty.
INTERNATIONAL			
1.	Al – Abbas Sugar Mills Ltd., Pakistan	1	4000
2.	Golden Sugar Company Ltd., Nigeria	1	4000
3.	White Nile, Sudan	10	3400
		5	1200
4.	Ramzan Sugar Mills Ltd., Pakistan	2	3000
5.	Metahara Sugar Factory, Ethiopia	2	2000
6.	Ashraf Sugar Mills Ltd., Pakistan	2	2000
7.	Mirpurkhas Sugar Mills Ltd., Pakistan	2	1500
DOMESTIC			
1.	Shivshakti Sugars Ltd., Karnataka	1	7000
2.	Balrampur Chini Mills Ltd., UP	4	6000
3.	Swaraj India Agro Ltd., Maharashtra	2	5000
4.	AB Sugars Ltd., Punjab	3	5000
5.	Rana Sugar Ltd., Punjab	2	5000
6.	Siddheshwar Sugars Ltd., Maharashtra	4	5000
7.	Chadha Sugars Ltd., Punjab	6	5000
8.	NSL Sugars Ltd., Koppa, Maharashtra	1	4000
		4	3000
		2	2000
9.	Venkateshkrupa Sugar Mills Ltd., Maharashtra	3	4000
		4	1200
10.	Narmada Sugars Pvt. Ltd., M.P.	1	5000
		2	4000
		1	2500
11.	Gokul Sugar Industries Ltd., Maharashtra	2	4000
12.	Gokul Mauli Sugars Ltd., Maharashtra	5	3500
13.	Shakti Sugar Mills Pvt. Ltd., M.P.	3	3000
14.	Shiraguppi Sugar Works Ltd., Karnataka	4	3000
15.	Shri Kamlabhawani Agro Industries Ltd., Maharashtra	4	3000
16.	Dewan Sugar Ltd., U.P.	2	3000
17.	Jay Mahesh Sugar Industries Ltd., Maharashtra	3	3000
		5	2500
		2	2000
18.	Shree Durga Khandsari Sugar Mills, M.P.	2	2500
19.	Shreeji Sugar and Power Pvt. Ltd., M.P.	1	2500
20.	Guleria Chini Mills Ltd., U.P.	6	2500
21.	Jai Bhavani SSK Ltd., Maharashtra	2	2000
22.	Shree Kedareshwar Khandsari Udyog, Gujrat	2	2000
23.	Godavari Biorefineries Ltd., Karnataka	10	2000
24.	Maarewa Sugars Pvt. Ltd, M.P.	4	1500
		2	500
25.	Bannari Amman Sugars Ltd., Tamilnadu	9	1500
26.	Ponni Sugars (Erode) Ltd., Tamilnadu	1	1500
27.	Dhanlakshmi Srinivasan Sugars Pvt. Ltd., Tamilnadu	7	1500
28.	Hemarus Technologies Ltd., Maharashtra	7	1500
29.	NSL Sugars Ltd., Alland, Maharashtra	1	1000
30.	GMR Sugar Industries Ltd., Karnataka	2	1000



SPRAY ENGINEERING DEVICES LIMITED

SPRAY HOUSE, C-82, Industrial Area,
Phase - VII, Mohali - 160 055, Punjab INDIA
Tel.: +91-172-3029703, Fax: +91-172-3029774

Copyright © Spray Engineering Devices Limited. All Rights Reserved.



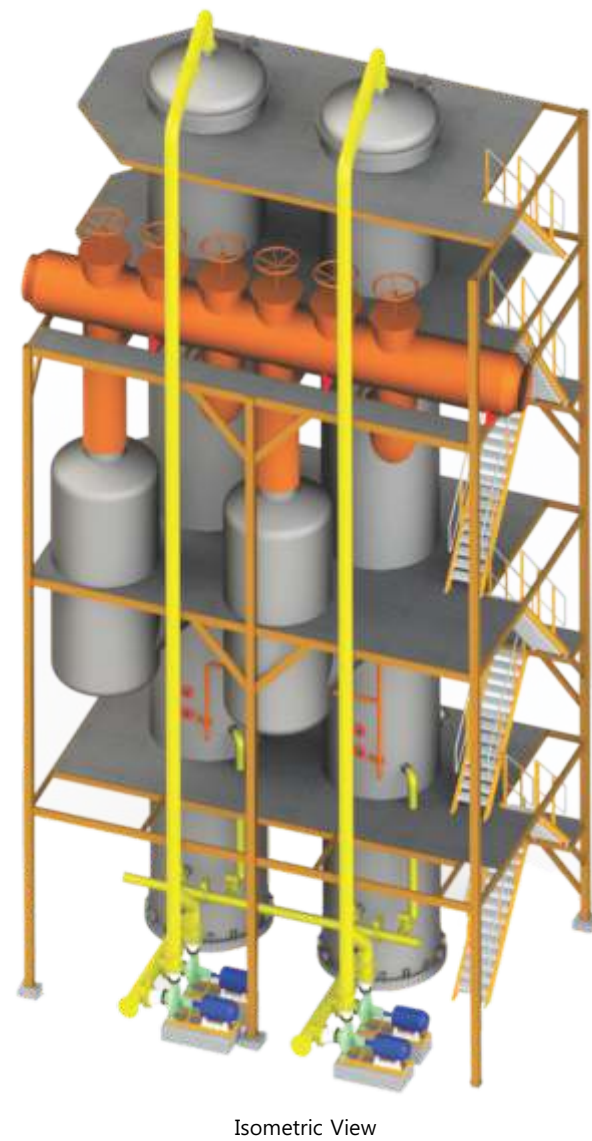
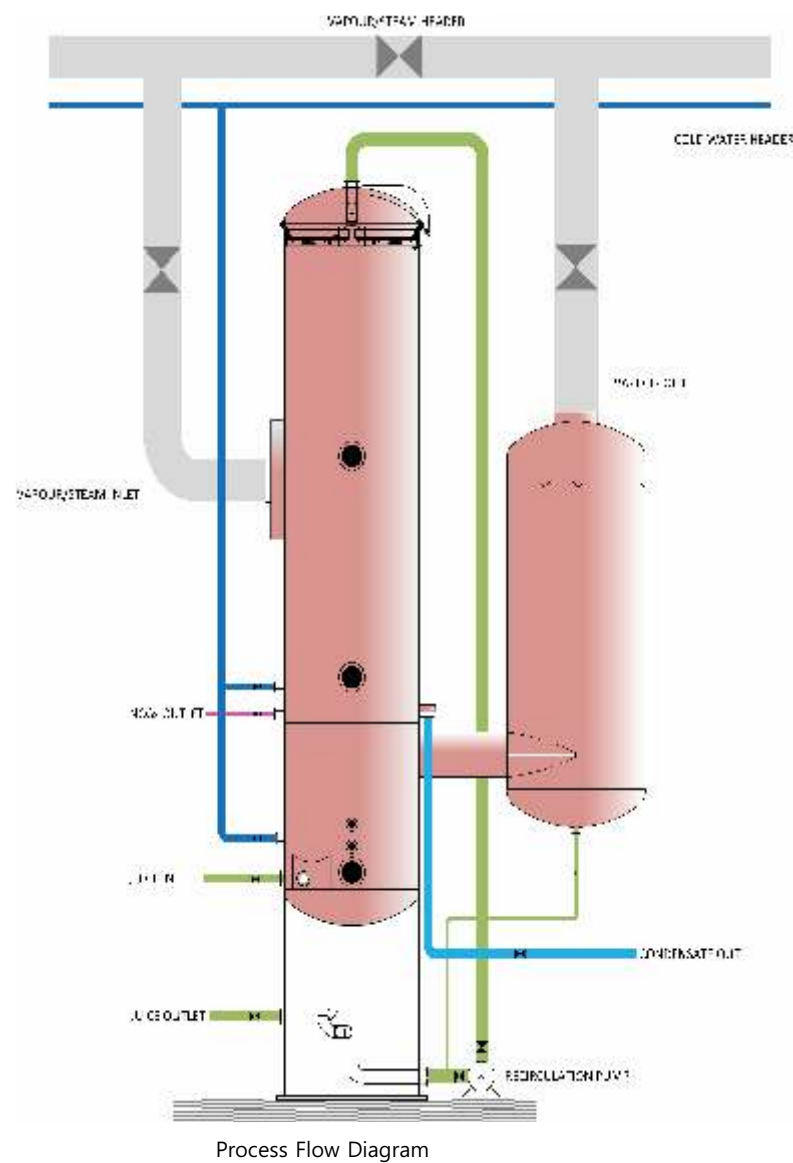
Tubular Falling Film Evaporator

"Highly Efficient Entrainment Separator & Distribution System"

Thin films formed in the tubular falling film evaporator reduces the pressure losses to reduce operating ΔT .

DISTINCT FEATURES:

- Low ΔT (4 - 6°C) operation.
- Optimized design for high-heat transfer rate (up to 3500 W/m²K).
- Total Residence time not more than 15 seconds.
- Uniform Liquid distribution, thereby ensuring less wetting rate to maintain heat transfer efficiency without dry patch or incursions.
- Efficient entrainment separator (More than 90% removal of upto 5 μ m size particles).
- Top cover with hinge assembly for easy maintenance and distributor alignment.
- Intelligent process control with fully automated system.
- Self-supporting structure with less foot print area.
- Ability of single unit with heating surface area upto 10000 m².
- Easy to clean and maintain.
- Patented and improved distribution system.



EFFICIENT DISTRIBUTION DESIGN :



PERFORMANCE PARAMETERS :

Particulars	Values
Operating range (Pressure / temp.)	300 kPa / 150°C (Max.)
ΔT	4-6°C
Heat Transfer Coefficient (HTC)	1500 - 3500 W/m ² K
Wetting Rate	16 - 16.5 l/min/cm
Mounting	Skirt
Manufacturing range	500 - 10000 m ²
Tube length	10 - 15 m

INSTALLATIONS :

